



Axelent X-Tra

Accessories for complete safety - industry and warehouse



MORION protection profiles

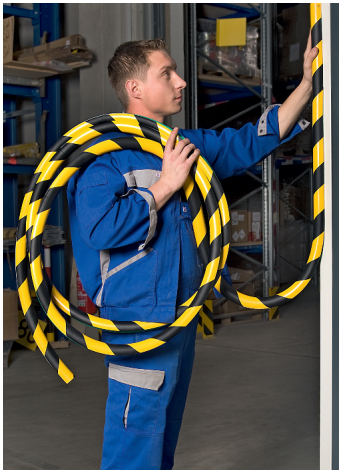


PU foam warning and safety guards. Protect and flag up danger areas. Avoid impact damage and protect corner angles, edges and projecting parts in warehouses and production areas. Black/yellow warning edges to DIN 4844.



Models:

- 1,000 mm sections
- Magnetic 1,000 mm sections (temperature resistant from - 20 °C to + 90 °C)
- Use indoors and out
- Easy-fit
- Absorb even extreme impact
- High-grade flexible polyurethane foam retains its shape
- UV radiation and solvent-resistant, silicone-free
- Withstand temperatures from - 40 °C to + 90 °C
- Cut to length easily on site



MORION pillar protection guards



Created to protect pillars. Protect vehicles against expensive collision damage. For round and square section pillars in car parks etc., walls, passageways and other uses.



Black/yellow safety sections with two built-in steel plates for permanent mounting. Bolts on.

- Flexible polyurethane foam, withstands UV radiation, does not lose its shape
- Dimensions 500 x 200 x 20 mm
- Temperature-resistant from - 40 ° to + 90 °C
- Practical for indoor and outdoor use
- Silicone-free, fire class B2

	Model	Section	Attachment	Length (mm)	Reference
	Pillar guards	Rectangular 500 x 200 x 20	For square-section pillars	500	422.16.620
			For round pillars		422.18.949
	Pipe guards	Curve 40 (30-50 mm Ø)	Self-adhesive	1,000	422.16.740
			Magnetic		422.21.293
	Pipe guards	Curve 60 (50-70 mm Ø)	Self-adhesive	1,000	422.17.049
			Magnetic		422.22.247
	Pipe guards	Curve 85 (70-100 mm Ø)	Self-adhesive	1,000	422.17.488
			Magnetic		422.20.581

Model	Section	Attachment	Colour	Length (mm)	Reference
	Trapezoidal 40/40	Self-adhesive	Black/yellow	1,000	422.18.441
		 Magnetic	Black/yellow	1,000	422.26.582
	Round 40/32	Self-adhesive	Black/yellow	1,000	422.13.249
		 Magnetic	Black/yellow	1,000	422.27.977
		Self-adhesive	Black/yellow	(5 m)	422.28.733
	Rectangle 60/20	Self-adhesive	Black/yellow	1,000	422.19.912
		 Magnetic	Black/yellow	1,000	422.20.678
		Self-adhesive	Black/yellow	(5 m)	422.26.707
		Pierced	Black/yellow	1,000	422.19.509
	Trapezoidal 40/40	Self-adhesive	Black/yellow	1,000	422.14.275
		 Magnetic	Black/yellow	1,000	422.23.243
	Angle 30/30	Self-adhesive	Black/yellow	1,000	422.17.559
		 Magnetic	Black/yellow	1,000	422.24.979
		Self-adhesive	Black/yellow	(5 m)	422.21.644
	Angle 60/60	Self-adhesive	Black/yellow	1,000	422.18.566
		 Magnetic	Black/yellow	1,000	422.25.253
	Round 40/40	Self-adhesive	Black/yellow	1,000	422.19.099
		 Magnetic	Black/yellow	1,000	422.20.276
		Self-adhesive	Black/yellow	(5 m)	422.25.830
	Trapezoidal 40/40/8	Fitted	Black/yellow	1,000	422.13.264
	Trapezoidal 40/80/8		Black/yellow	1,000	422.15.601
	Round 40/40/8		Black/yellow	1,000	422.17.696
			Black/yellow	(5 m)	422.20.668
	Rectangular 25/30/8		Black/yellow	1,000	422.26.168

MORION impact guards



High-strength steel guards

Protects people and equipment, marks out traffic routes (people and vehicles).

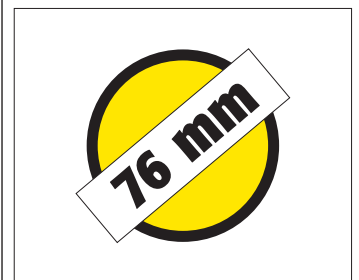
High-grade steel 76 mm dia., 3 mm thick.

Indoor model
Black/yellow plastic coated (k).

Outdoor model, hot-dip galvanised,
plastic-finished (f + k).

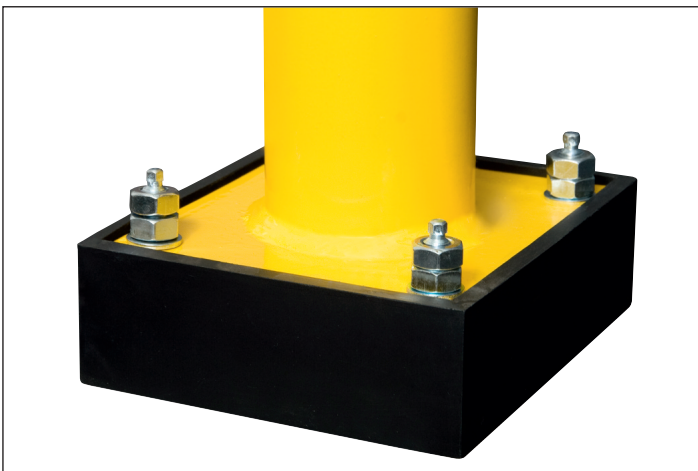
Cast-in concrete version at no extra charge.

- Withstands maximum impact
- Bolt-on
- One-piece construction – no welds
- Indoor and outdoor use
- Range of heights and widths available
- Corner guard (90°) also available



Impact bracket	H x W (mm)	Surface	Reference
Yellow with baseplate	350/375	k	195.15.621
		f + k	195.18.233
Yellow with black edges, baseplate	350/750	k	195.14.450
		f + k	195.16.265
	350/1,000	k	195.14.589
		f + k	195.13.499
	350/2,000	k	195.29.703
		f + k	195.22.846
	600/750	k	195.18.515
		f + k	195.17.623
	600/1,000	k	195.18.943
		f + k	195.19.157
	600/2,000	k	195.23.098
		f + k	195.28.325
1,200/750	k	195.19.573	
	f + k	195.17.296	
1,200/1,000	k	195.17.903	
	f + k	195.18.822	
1,200/2,000	k	195.21.170	
	f + k	195.28.003	
Corner guard	(mm) H x W	Surface	Reference
Yellow with black edges, baseplate	350/600/600	k	195.13.241
		f + k	195.14.708
	600/600/600	k	195.14.637
		f + k	195.17.083
	1,200/600/600	k	195.17.512
f + k		195.13.874	
Universal expander with bolts 12/100			100.17.393
Bolt-through expander 12/120			100.24.665

MORION SWING impact guards



Standard model MORION impact barriers are equipped with flexible polyurethane baseplates. These polythene blocks retain constant elasticity, withstand UV radiation and absorb major barrier impacts.

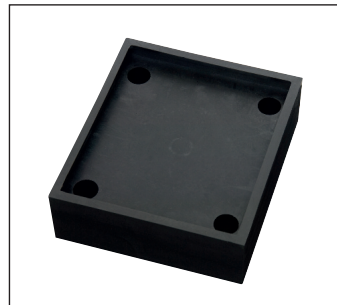
- Flexible elastic safety bracket (flexible baseplate)
- Limits collision damage
- Maximum yield: 10°

Dimensions: 76 mm dia., 3 mm thick.
Three heights:
390 mm (max. yield 55 mm),
640 mm (max. yield 95 mm) and
1,240 mm (max. yield 190 mm)

Four lengths:
375, 750, 1,000 and 2,000 mm.

Finishing:
For outdoor use: hot-dip galvanised and coated in yellow epoxy colour with black warning edges.
For indoor use: epoxy coated with black warning edges.

SWING safety brackets are mounted using special 12 x 120 mm screws with bolts (accessory: eight-hole kit).



Impact bracket	H x L x D (mm)	Surface	Reference
Yellow with baseplate	390/375	P	196.21.558
		G + P	196.24.195
	390/750	P	196.23.927
		G + P	196.28.870
	390/1,000	P	196.20.479
		G + P	196.28.678
	390/2,000	P	196.23.138
		G + P	196.29.639
	640/750	P	196.27.339
		G + P	196.26.638
Yellow with black edges, baseplate	640/1,000	P	196.29.617
		G + P	196.21.658
	640/2,000	P	196.28.884
		G + P	196.20.921
	1,240/750	P	196.21.978
		G + P	196.23.976
	1,240/1,000	P	196.21.739
		G + P	196.29.532
	1,240/2,000	P	196.27.054
		G + P	196.22.922
Mounting kit		-	100.20.858

MORION impact guards with under-run protection



Same as impact brackets, but with 4 mm thick steel plate under-run protection.

Bracket height 350 mm with 150 mm high under-run protection.

Bracket height 600 mm with 400 mm high under-run protection.

Version	H x W (mm)	Surface	Reference
Bracket height 350 mm 150 mm high under-run protection	350/750	Plastic-coated	196.16.857
	350/1,000		196.15.132
Bracket height 600 mm 400 mm high under-run protection	600/750		196.17.125
	600/1,000		196.17.619
Universal expander with bolts 12/100			100.17.393
Bolt-through expander 12/120			100.24.665

MORION removable impact guards



The special mounting plate means brackets can be removed easily to allow or block passage temporarily.

How it works: the two steel plates (15 mm) are bolted in place. Pipe bracket is mounted in place, pushed backwards and fitted in place.

- Increased permitted load
- Heights: 350 or 600 mm
- Sizes: 750 or 1,000 mm
- Easily dismantled
- Damaged brackets easily replaced



Model	H x W (mm)	Surface	Reference
Bracket 76/3,0 mm unscrews	350/750	Epoxy-coated	196.15.471
	350/1,000		196.17.299
	600/750		196.17.689
	600/1,000		196.19.365
Universal expander with bolts 12/100			100.17.393
Bolt-through expander (concrete floors) 12/100			100.24.665

MORION XL impact guard



Extremely strong pipe bracket in high-grade steel to protect against collision damage. Protects extra-important or sensitive areas, such as pillars, pipes, building sections. XL impact barriers are bolted on (baseplate 200 x 140 x 10 mm).

Concrete cast-in version available on demand (at no extra charge).

Dimensions:
108 mm dia.
3.6 mm thick.

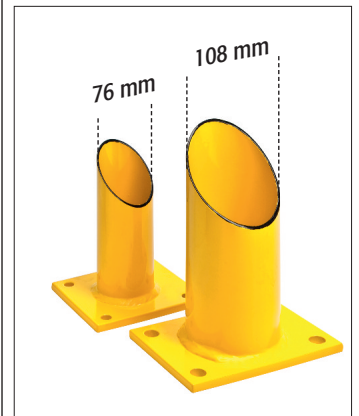
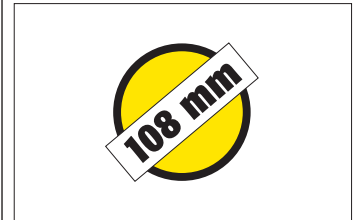
Two heights:
600 or 1,200 mm.

Four widths:
650, 1,000, 1,500 or 2,000 mm.

NEW:

Also available as XL corner bracket 900 mm on a side.
Dimensions (L x L x D):
600 x 900 x 900 mm/
1,200 x 900 x 900 mm.
200 x 140 x 10 mm
Bolt-through expander
(concrete floors)

- Hot-dip galvanized, plastic coated. Yellow with black warning stripes (f + k = outdoor use)
- Plastic-coated. Yellow with black warning stripes (k = indoor use)



Design	H x W (mm)	Surface	Reference
	600 x 650	k	195.23.294
		f + k	195.22.231
	600 x 1,000	k	195.20.048
		f + k	195.23.338
	600 x 1,500	k	195.28.885
		f + k	195.28.652
Yellow with black edges	600 x 2,000	k	195.22.648
		f + k	195.20.481
Baseplate 200 x 140 x 10 mm	1,200 x 650	k	195.26.829
		f + k	195.27.565
	1,200 x 1,000	k	195.23.519
		f + k	195.26.554
	1,200 x 1,500	k	195.25.036
		f + k	195.26.278
	1,200 x 2,000	k	195.23.300
		f + k	195.28.961

Bolt-through expander 16/140	100.14.550
------------------------------	------------

Model	H x W (mm)	Surface	Reference
Yellow with black edges	600 x 900 x 900	P	195.23.857
		G + P	195.27.689
Baseplate 200 x 140 x 10 mm	1,200 x 900 x 900	P	195.27.431
		G + P	195.23.796

Bolt-through expander 16/140	100.14.550
------------------------------	------------

MORION collision bars



Protect shelves, fittings etc. from potential collision damage. Stop forklift trucks, roller containers and transport vehicles.

Limits circulating areas easily and protects installations against being hit by trucks.

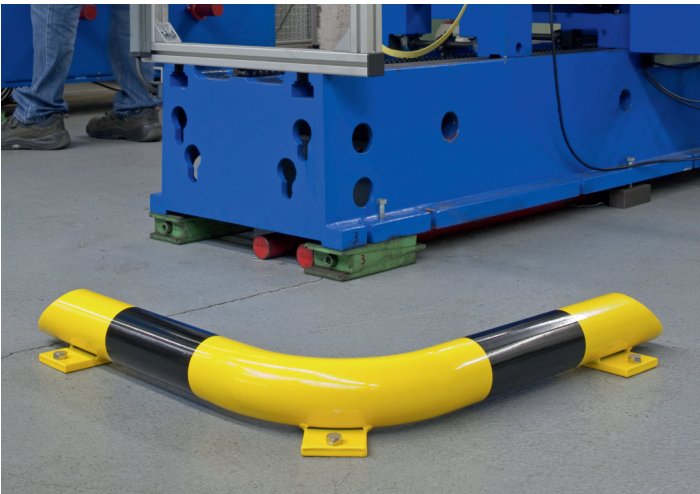
Top-grade steel 76 mm diameter, 3 mm thick, slanting edges.

- Low construction (86 mm)
- Bolt-on design
- For indoor use
- Three lengths: 400, 800, 1,200 mm



Model	H x W (mm)	Surface	Reference
Yellow with black bands	86/400	Epoxy-coated	199.13.478
	86/800		199.19.220
	86/1,200		199.14.143
Universal expander with bolts 12/100			100.17.393
Bolt-through expander (concrete floors) 12/100			100.24.665

MORION corner collision bar



NEW: Corner guard strip, 638 mm on a side.

Full dimensions: 86 x 638 x 638 mm.

- Low construction (86 mm)
- Bolt-on
- For indoor use

Model	H x W (mm)	Surface	Reference
Yellow with black bands	86 x 638 x 638	Epoxy-coated	199.22.677
Universal expander with bolts 12/100			100.17.393
Bolt-through expander (concrete floors) 12/100			100.24.665

MORION barriers



Steel guard fences protecting danger areas and workplaces.

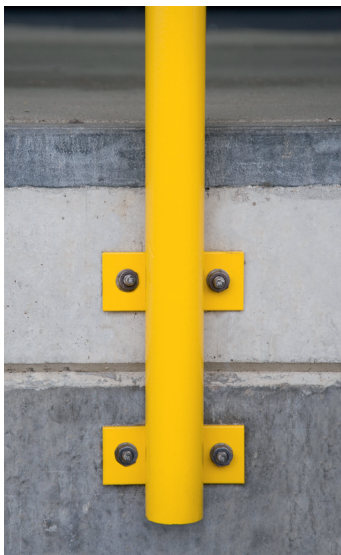
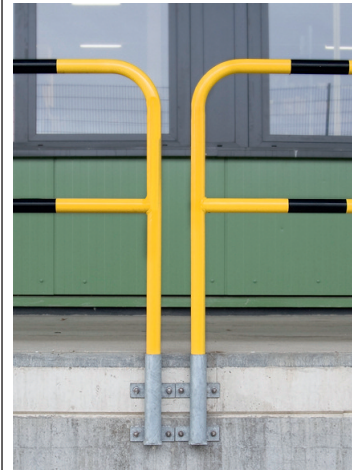
Bent high-grade steel, 48 mm dia., material 2 mm thick.

Coated for indoor use (k).

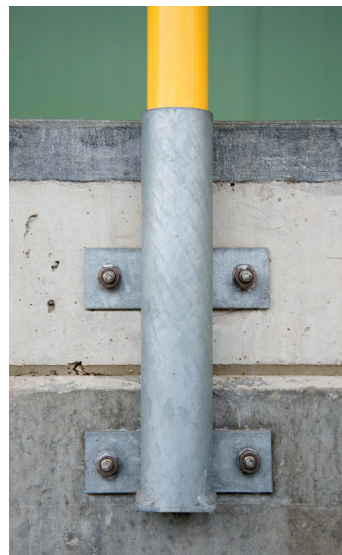
Hot-dip galvanised and coated for outdoor use (f + k).

Side (wall-) mounted design, can be bolted permanently in place, or there is a temporary version with plug-in sleeves.

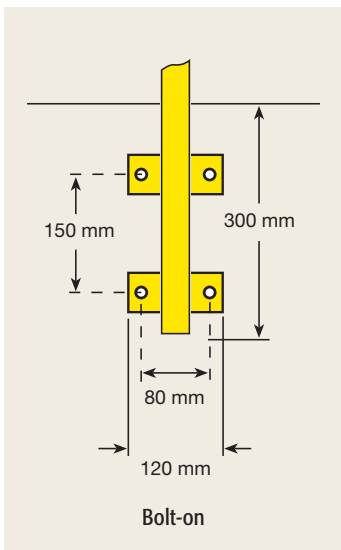
- Yellow and black bands
- Three widths: 1,000, 1,500, 2,000 mm
- Height above floor level 1,000 mm
- Bolt-on or side-mounted



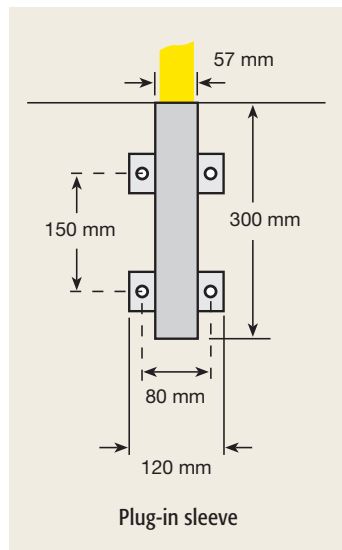
Fastskruvning



Löstagbar



Bolt-on



Plug-in sleeve

Design	H x W (mm)	Surface	Reference
To be bolted on permanently with baseplate 160 x 70 x 10 mm	1,000/1,000	k	201.14.228
		f+k	201.15.512
	1,000/1,500	k	201.15.794
		f+k	201.17.982
1,000/2,000	k	201.14.465	
	f+k	201.13.553	

Design	H x W (mm)	Surface	Reference
Side-mounted, permanently installed (bolt-on)	1,300/1,000	k	201.23.846
		f+k	201.23.287
	1,300/1,500	k	201.21.475
		f+k	201.27.174
	1,300/2,000	k	201.20.276
		f+k	201.24.456

Design	H x W (mm)	Surface	Reference
Side-mounted, removable	1,300/1,000	k	201.25.003
		f+k	201.20.059
	1,300/1,500	k	201.22.243
		f+k	201.27.829
	1,300/2,000	k	201.21.658
		f+k	201.21.335

Universal expander with bolts 12/100	100.17.393
Bolt-through expander (concrete floors)	100.24.665
Plug-in sleeve 120/300	201.27.454

MORION guard post



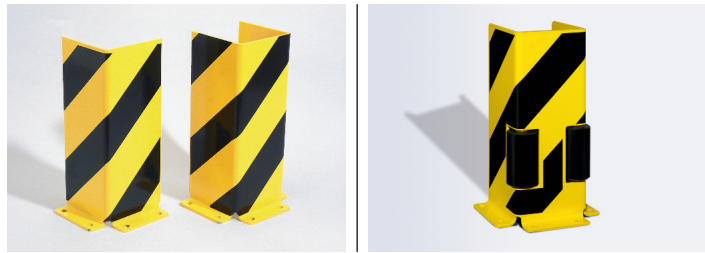
Maximum strength steel guard. Protects building corners, loading bays, pillars, gates etc. Hot-dip galvanized steel, black/yellow finish. XXL version (273 mm) can also be filled with concrete.

- Heavy duty thickness: 3.6 – 5.0 mm
- Bolt-on or cast in
- Indoor and outdoor use
- Four diameters available: 90, 159, 194 and 273 mm



	Design	Ø x T x H (mm)	Reference
S	Bolt-on	90/3,6/1,200	199.19.943
	Cast in	90/3,6/1,600	199.17.454
L	Bolt-on	159/4,5/1,200	199.16.549
	Cast in	159/4,5/1,600	199.15.852
XL	Bolt-on	194/4,5/1,200	199.15.151
	Cast in	194/4,5/1,600	199.19.836
XXL	Bolt-on	273/5,0/1,200	199.19.146
	Cast in	273/5,0/1,600	199.13.769
Universal expander with bolts S+L, 14/110			100.18.268
Bolt-through expander with bolts XL+XXL, 16/140			100.14.550

MORION collision guards



Protects pillars in corners and circulating areas.

New: With 1 or 2 guide rollers
Polyamide guide rollers, 110 mm high, black, 75 mm above ground level.

- Solid steel collision guards
- Indestructible
- Angles 400, 800 and 1,200 mm high
- U-section 400 mm high

Design	No. of expanders	H x SL x gauge (mm)	Reference
Angle 400	4	400/160/5	197.15.928
		400/160/6	197.13.182
Angle 800		800/160/6	197.14.605
Angle 1.200		1,200/160/6	197.18.380
U-section	6	400/160/5	197.28.897
		400/160/6	197.18.365

Design	No. of expanders	H x SL x gauge (mm)	Reference
Angle with 1 guide roll	4	400/160/6	197.22.542
U-section 2 guide rolls	6	400/160/6	197.22.021
Universal expander with bolts		12/100	100.17.393
Bolt-through expander (concrete floor)		12/120	100.24.665

MORION pipe protectors (wall-mounted)



Protects pipes, lines, wiring etc. against collision damage.
U-section steel with four slots for easy attachment: find reference points, position screws, hang guard and tighten screws.

Heights: 300 and 500 mm
Internal size: 200 mm
Overall size: 292 mm
Steel thickness: 4 mm

- Yellow epoxy-coated (for indoor use)
- Hot-dip galvanized (for indoor and outdoor use)

Internal size 200 mm, 4 mm thick	No. of expanders	H x L x D (mm)	Reference
Hot-dip galvanized	4	300 x 292 x 230	200.26.403
Yellow epoxy			200.28.581
Hot-dip galvanized	4	500 x 292 x 230	200.26.783
Yellow epoxy			200.20.844

MORION kickboard (steel)



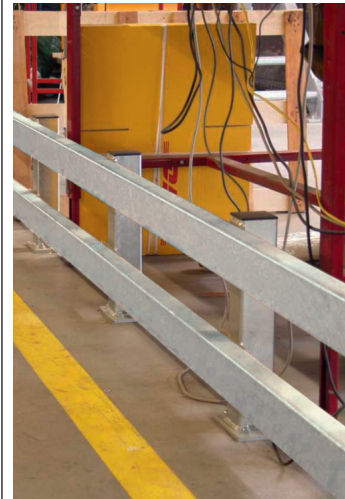
Steel angle irons protect against damaging warehouse, fire and safety doors.

Strips have 45° cut ends, so they can be made into 90° corners.

- 10 or 6 mm thick
- 800 or 1,200 mm long
- 150 x 100 mm high/deep
- Yellow finish

Design	thickness (mm)	No. of expanders	H x L x D (mm)	Reference
Steel bracket 800 mm	6	5	150/800/100	197.24.121
	10			197.17.683
Steel bracket 1,200 mm	6	7	150/1,200/100	197.29.576
	10			197.13.775
Universal expander with bolts			12/100	100.17.393
Bolt-through expander (concrete floors)			12/120	100.24.665

MORION anti-collision bars



Protects pillars, workplaces, pipes etc. against being damaged by trucks and shunting traffic.

- Solid steel sections absorb maximum force.
- Innovative cutting system means can be assembled single-handed.
- Individual, property-related tailoring and design.



Fitting couldn't be easier: bolt posts in place, bolt bars (C-section) onto posts using our new mountings.

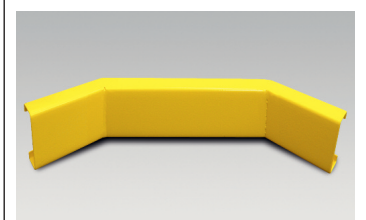
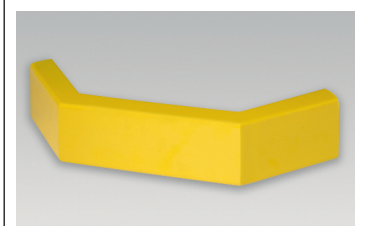
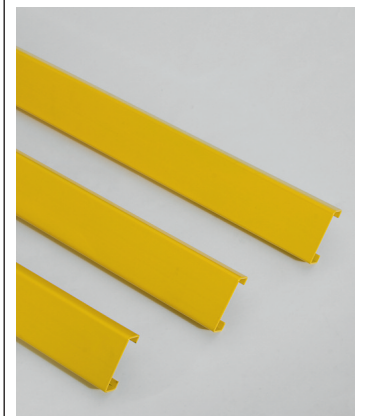
Corner bars can be used to provide 90° protection.

Post	Dimensions (mm) H x B x D	Finish	Reference
Support Post with Base plate 160 x 140 x 10 mm	465 x 80 x 80	Hot-dip galvanised	198.27.440
		Yellow plastic coated	198.22.571
		Hot-dip galvanised and yellow plastic coated	198.27.574

Bars	Dimension (mm) Length	Finish	Reference
C-section 100 x 40 x 3 mm	1,000	Hot-dip galvanised	198.21.064
	1,200		198.21.686
	1,500		198.20.283
	2,000		198.21.045
	1,000	Yellow plastic coated	198.21.933
	1,200		198.21.114
	1,500		198.26.826
	2,000		198.26.176
	1,000		198.23.147
	1,200		Hot-dip galvanised and yellow plastic coated
1,500	198.22.929		
2,000	198.20.197		

Corner bars	Dimension (mm) H x B x D	Finish	Reference
Outer corner	C-section 100 x 40 x 3 mm	Hot-dip galvanised	198.21.618
Inner corner			198.22.027
Outer corner		Yellow plastic coated	198.23.160
Inner corner			198.26.087
Outer corner		Hot-dip galvanised and yellow plastic coated	198.24.064
Inner corner			198.26.165

Accessories		Finish	Reference
Bar lock		Black	198.26.315
Bar extension set, aluminium		Hot-dip galvanised	198.28.106
		Hot-dip galvanised and yellow plastic finish	198.25.794
Universal expander with bolts 12/100 (4 st per post)			100.17.393
Bolt-through expander (concrete floors) 12/120			100.24.665



MORION anti-collision barriers

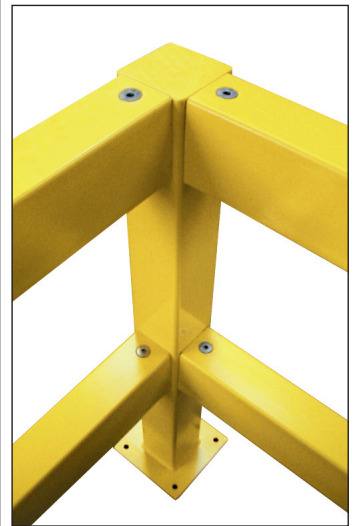
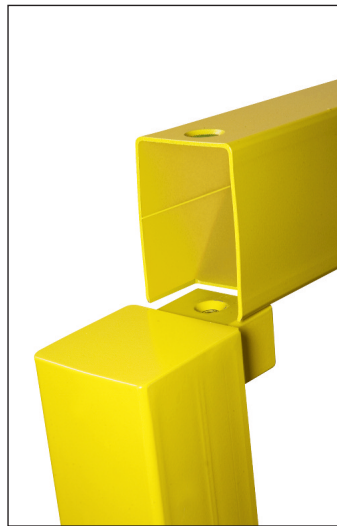


Highly robust solid protective and safety fencing made of steel sections which withstand very large forces.

Demarcate roadways clearly, protect workplaces and equipment.

- Variable system with posts and horizontal bars
 - Smooth shape, no projecting panels or bolts
 - For indoor and outdoor use (see table)
 - Quick and easy to assemble
- Posts 100 x 100 mm, yellow.

- Bolt-on panels (200 x 200 x 10 mm)
 - Height: 500 mm or 1,000 mm.
- Followers 120 x 80 mm, yellow.
Lengths: 1,000, 1,200, 1,500 and 2,000 mm.



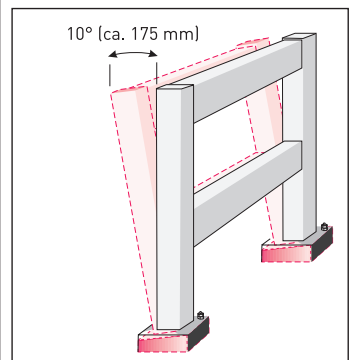
NEW: SWING flexible collision protection barriers: fixed posts are fitted with polyurethane springs which are UV-resistant and remain elastic.

Railings absorb forces and yield up to 10°.

Reduce collision damage significantly.

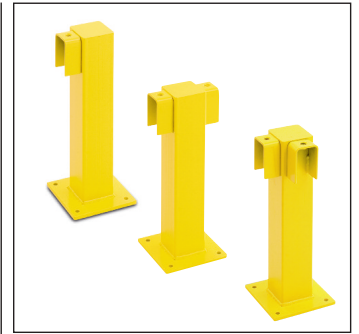
Flexible baseplate makes railing structure 40 mm higher = 540 or 1,140 mm.

Special screw-mounted 12 x 120 mm with bolts (accessory: eight-hole kit).

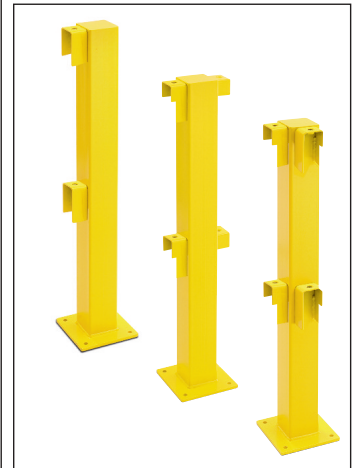


MORION Rambarde shock absorbers

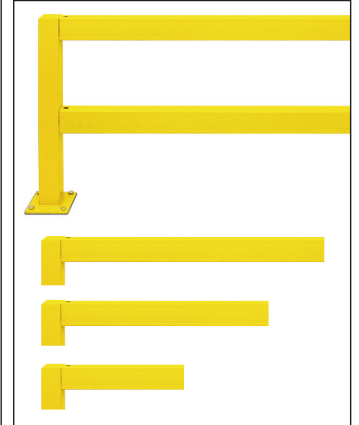
500 mm post yellow baseplate 200 x 200 x 10	Dimension (mm) H x B x D	Finish	Reference
Start/end	500 x 100 x 100	k	194.16.094
		f + k	194.15.765
Centre		k	194.18.550
		f + k	194.18.142
Corner		k	194.13.760
		f + k	194.15.032



1,000 mm post yellow baseplate 200 x 200 x 10	Dimension (mm) H x B x D	Finish	Reference
Start/end	1,000 x 100 x 100	k	194.14.244
		f + k	194.13.501
Centre		k	194.17.026
		f + k	194.13.894
Corner		k	194.18.205
		f + k	194.15.572
Universal expander with bolts 12/100 (4 x per post)			100.17.393
Bolt-through expander (concrete floors) 12/120			100.24.665

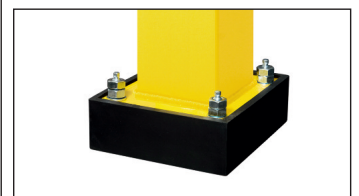


Followers 120 x 80 mm, yellow, incl. mounting bolts	Length (mm)	Finish	Reference
<div style="border: 1px solid black; padding: 5px; margin-bottom: 5px;"> For indoor use, yellow plastic coating (k) </div> <div style="border: 1px solid black; padding: 5px;"> For outdoor use Hot-dip galvanized and yellow plastic coating (f + k) </div>	1,000	f + k	194.18.997
		f + k	194.16.672
	1,200	k	194.16.172
		f + k	194.14.863
	1,500	k	194.15.942
		f + k	194.16.449
	2,000	k	194.13.434
		f + k	194.13.826



SWING flexible anti-collision railings

For fixed posts, yield up to 10°	Dimension (mm) H x B x D	Finish	Reference
Flexible baseplate for collision-proof railings	50 x 200 x 200	Polyurethane black	422.21.456
Fitting kit	300 x 100 x 100	-	100.20.858



MORION warning tape posts



Robust, cost-effective barrier and traffic guidance system. Painted aluminium tops, fillable plastic feet, can also be bolted on, with reflectors. Striped self-tensioning tape.

- Prominent warning
- 3.00 m or 4.00 m tape
- Overall height 985 mm
- Indoor and outdoor use
- Low-cost



Finish	Tape colour	Tape length (mm)	Reference
Painted yellow	Black/yellow	3,000	179.14.759
		4,000	179.22.511
	Yellow	3,000	179.17.353
		4,000	179.26.335
Painted red	Red/white	3,000	179.19.970
		4,000	179.28.338
	Red	3,000	179.15.362
		4,000	179.24.575
Wall clips			179.16.000
Tape joint			179.17.430

GUARDA chain post kit



Easy to use chain posts create quick and easy barriers.

Plastic tops, red/white or black/yellow, diameter 40 mm.

Chain mountings (lugs) built into heads.

Three different bases to choose from:

Plastic, concrete-filled, triangular, 2.9 kg.

Hard rubber, square, 1.8 kg.

Plastic, fillable, round, 1.5 kg.

- Low centre of gravity, very stable
- Height 870 mm
- Highly cost-effective

Kit comprises:

Six chain posts
10 m chain
10 join sections and
10 attachment hooks

Finish	Colour	Foot (mm)	Reference
With concrete filled plastic foot (triangular)	Red/white	300 SL	175.16.146
	Black/yellow		175.13.735
With hard rubber foot (square)	Red/white	265 x 265	175.19.176
	Black/yellow		175.17.668
With round fillable plastic foot	Red/white	300 Ø	175.15.850
	Black/yellow		175.17.247

MORION cone tape for warning cones

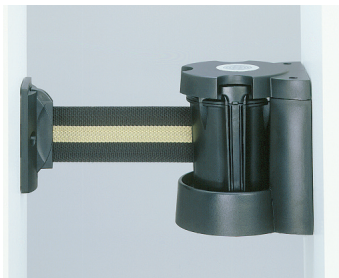


For fast, moveable barriers, our cone tape fits easily to a warning cone. The self-tensioning tape runs out easily and can be attached to the next cone tape or a wall mounting (accessory).

- Extra-long: 9 m tape
- Warning colours: red/white
- Benefits: up to 80 m² space with four tape cones

Model	Reference
MORION tape cone	179.16.914
Wall adapter	179.16.064
Wall mounting	179.19.426

MORION wall tape



Screw-mounted tape cassette in high-strength plastic.

Pull-out self-tensioning tape attaches to wall clip (accessory).

- 3.0 m or 4.0 m tape
- Five different tape colours
- Screw-mounted

Tape colour	Tape length (mm)	Reference
Yellow/black stripes	3,000	179.18.124
	4,000	179.23.024
Red/white stripes	3,000	179.13.738
	4,000	179.23.085
Black/yellow/black	3,000	179.19.708
	4,000	179.29.337
Black/red/black	3,000	179.16.023
	4,000	179.26.981
Black/silver/black	3,000	179.18.931
	4,000	179.29.945
Wall clips		179.16.000
Tape joint		179.17.430

MORION wall tape Magnetic



Wall sockets and fittings are fitted with magnets, so tape can be attached to any metal surface, in warehouses etc.

- Magnetic mounting
- Extends up to 3-4 m
- Five different tape colours

Tape colour	Tape length (mm)	Reference
Black/yellow stripes	3,000	179.27.462
	4,000	179.23.187
Red/white stripes	3,000	179.27.835
	4,000	179.21.407
Black/yellow/black	3,000	179.20.545
	4,000	179.29.326
Black/red/black	3,000	179.25.944
	4,000	179.23.919
Black/silver/black	3,000	179.21.084
	4,000	179.27.176
Wall clips		179.26.987
Tape joint		179.17.430

Non-slip tape, self-adhesive



Self-adhesive tape with coarse grain surface for use indoors and out. Makes slippery floors safer, e.g. entrances, stairs, ramps etc.



- Easily applied
- Can be used in humid conditions and outdoors (order edge paint at same time)
- Chemical-resistant
- 18.3 m per roll, four sizes
- Anti-slip R 13 to DIN 51130

Roll size (mm)	Colour	Reference
19	Black	262.19.627
	Grey	262.14.062
	Clear	262.14.493
	Yellow warning	262.19.339
25	Black	262.15.300
	Grey	262.13.246
	Clear	262.16.486
	Yellow warning	262.18.624
50	Black	262.13.195
	Grey	262.14.026
	Clear	262.17.560
	Yellow warning	262.19.412
	Yellow/black	262.17.329
100	Black	262.13.274
	Grey	262.19.012
	Clear	262.16.851
	Yellow warning	262.17.187
	Yellow/black	262.14.441
Edge paint		262.18.646

Anti-slip tape, ergonomic workplace mats



- Protects joints
- Ergonomic
- Anti-slip R11 (DIN 51130)
- Fireproof B2
- Chemical-resistant
- Single colour, dark grey:
600 x 900 mm or 900 x 1,200 mm;
Thickness: 10 mm
- Dark grey with yellow warning edges:
900 x 1,250 mm;
Thickness: 12 mm

Our MORION ergonomic workplace mats in high-quality dark grey vinyl foam help people stand in the same place for long periods of time. The vinyl is scratch-resistant, has a pronounced dampening effect and retains its elasticity for many years in use.

Model	Dimensions (mm)	Thickness (mm)	Reference
Dark grey	600 x 900	10	275.28.976
	900 x 1,200		275.29.596
Dark grey with yellow warning edges	900 x 1,250	12	275.22.724

PANORAMA-360 four-way mirror



Hemispherical security anti-burglary mirror, acrylic.

Used in warehouses, production plant and sales premises.

Easy to fit: screws direct onto wall surface or suspended using fitting kit.

- 360° all-round view
- Distortion-free
- Ideal for vehicle traffic
- Prevents accidents and theft
- Feather-light, no risk of injury

Design	Mirror size (mm) Ø	Range (m)	Reference
360/600	600	3	250.15.138
360/800	800	4	250.17.220
360/900	900	5	250.10.202
360/1,000	1,000	6	250.18.256
360/1,250	1,250	8	250.13.084
Accessories			Reference
Ceiling mounting kit			255.10.618

DETEKTIV observation mirror



Observation and monitoring mirror in high-impact acrylic glass. Tried and tested in production, stores and sales premises.

Wall mounting: normally 250 mm from wall, extended holder (550 mm from wall) available on request.

- For indoor use only
- Fish-eye effect
- Feather-light, no risk of injury
- Easily adjustable view angle
- With wall mounting bracket



Design	Mirror size (mm) Ø	Range (m)	Reference
With standard wall mount 250 mm	300	2	251.13.487
	400	3	251.17.667
	500	5	251.18.945
	600	7	251.15.534
	700	9	251.16.210
	800	11	251.13.505
Extended wall mounting arm 550 mm			255.10.700

SPION industrial mirror

Round high-impact acrylic glass mirror



Ideal for observing bottlenecks and processes in the factory (machine inspections, traffic routes).

- For use indoors and in protected places outdoors
- Very good image reproduction
- Easy to install
- With wall-mounting bracket

Mirror size (mm)	Range (m)	Reference
300 Ø	2	247.17.989
400 Ø	3	247.13.962
500 Ø	5	247.14.455
600 Ø	7	247.19.332
700 Ø	9	247.18.522
800 Ø	11	247.18.504
400 x 600	5	247.18.638
600 x 800	7	247.19.825
800 x 1,000	9	247.14.705

DETEKTIV-AT triangular mirror



Triangular acrylic glass mirror for indoor use. The ideal cash mirror for stores and production areas. With universal individually adjustable swan neck mounting. Can be mounted on slanting surfaces and sections (e.g. cable shafts).

- Wide-angle effect
- Brilliant image
- With universal mounting
- Feather-light

Mirror size (mm)	Range (m)	Reference
330 Ø	2	252.10.021

MAX truck mirror



High-quality wide-angle rear-view mirror for forklift trucks (floor carrier vehicles) and construction equipment. High-impact acrylic glass.

Dimensions: 270 x 135 x 75 mm.

- 180° view
- Universal mounting
- Individually adjustable
- For indoor and outdoor use

Mirror size B x H x D (mm)	Range (m)	Reference
270 x 135 x 75	1	254.16.897

INDOOR room mirror



Oval acrylic glass observation mirror for indoor use.

With black screw-on frame. The special curvature provides a large field of view for its highly compact dimensions.

- For indoor use
- Wide field of view
- Small size
- Brilliant image
- For businesses and offices

Design	Mirror size (mm)	Range (m)	Reference
INDOOR	365 x 275 x 80	3	252.20.171

Detektiv with magnetic mounting



Round acrylic glass mirror with powerful magnetic foot mounting.

With adjustable swan neck mounting for use on straight flat steel surfaces.

For use indoors and in sheltered positions outdoors.

- Wide field of view
- Wide-angle effect
- Exceptional image quality
- Universal use



Design	Mirror size (mm) Ø	Range (m)	Reference
DETEKTIV	300	3	252.25.675
	400	5	252.29.230

PROline line marking paint



High-class floor marking paint in spray cans.









Special fast-drying paint – can be walked on in a few minutes.

No barriers normally required.

Permanent markings for indoor and outdoor use.

- Good coverage, long-lasting
- Wear-resistant, chemical-resistant
- Highly compact, 750 ml
- Rapid-drying (approx. 20 min)
- Available in eight colours



In 750 ml cans	Colour	Reference
	White ~ RAL 9016	260.11.745
	Yellow ~ RAL 1023	260.11.089
	Orange ~ RAL 2009	260.17.886
	Red ~ RAL 3020	260.12.976
	Green ~ RAL 6024	260.11.015
	Blue ~ RAL 5017	260.12.531
	Grey ~ RAL 7042	260.11.057
	Black ~ RAL 9017	260.11.954

PROline paint marking kit



Marking equipment, incl. two cans of paint (white or yellow), line cord and chalk.

- Marking equipment for line widths 50 – 75 mm.
- Individually adjustable

Design	Reference
PROline-paint marking kit WHITE	260.11.610
PROline-paint marking kit YELLOW	260.10.795
PROliner: Universal marking equipment for lines 50 – 75 mm wide	260.10.174
ROADliner: Universal marking equipment for lines 100 – 130 mm wide	260.10.383
Handliner: Handheld marker unit	260.10.437

PROline tape floor marking, self-adhesive












High-quality self-adhesive vinyl floor-marking tape.

For marking areas indoors.










- Extra-thick: 200 microns
- Can be removed without leaving any residues
- Available in nine colours
- Roll length 33 m
- Widths: 50 mm or 75 mm



PROline tape 50 mm

Colour	Reference
	White 261.16.606
	Yellow 261.13.796
	Blue 261.19.771
	Red 261.13.752
	Green 261.18.249
	Orange 261.16.322
	Red/white 261.18.826
	Yellow/black 261.17.941
	Green/white 261.17.310

PROline tape 75 mm

Colour	Reference
	White 261.16.619
	Yellow 261.18.798
	Blue 261.15.989
	Red 261.18.675
	Green 261.16.655
	Orange 261.17.531
	Red/white 261.15.954
	Yellow/black 261.13.438
	Green/white 261.19.066

Tapeliner tape dispenser



For laying floor marking tape easily and comfortably.

- Stable, ergonomic
- Includes cutting blade
- For 50 and 75 mm rolls

Design	Reference
Marking unit with cutter	261.16.528

PROline industrial floor paint










Highly robust, wear resistant one-part paint for indoor use.

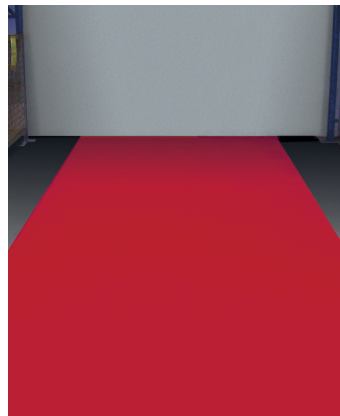
For floors in industrial premises, workshops and warehouses where extensive movements are involved. Can be used on concrete, asphalt, cement and composite tiles.

Apply with roller or brush.

- Covers well, dries fast
- Designed to withstand forklift trucks, long-lasting
- Wear-resistant, chemical-resistant
- Easy to use

Each 5 l can covers around 20-25 m².

In 5 l cans	Colour	Reference
	White ~ RAL 9016	263.13.824
	Yellow ~ RAL 1003	263.14.807
	Red ~ RAL 3001	263.18.881
	Blue ~ RAL 5017	263.19.179
	Light grey ~ RAL 7001	263.13.740
	Dark grey ~ RAL 7030	263.14.968
	Matt black ~ RAL 9004	263.14.054



Non-slip PROline Industrial floor paint








Same characteristics as PROline paint for industrial premises, but with fine quartz particles.

Guarantees non-slip surfaces which give good grip. For floors in industrial premises which are heavily used. Works on concrete, asphalt, cement. Easy to use: mix paint and apply with a roller.

- Covers well, dries fast
- Increases wear resistance and prolongs active life
- Highly resistant to oil, solvents and cleaners
- Forklift truck-proof

Each 5 l can covers around 20 m².



In 5 l cans	Colour	Reference
	White ~ RAL 9016	263.23.941
	Yellow ~ RAL 1003	263.24.370
	Blue ~ RAL 5017	263.25.507
	Light grey ~ RAL 7001	263.26.072
	Dark grey ~ RAL 7030	263.24.599

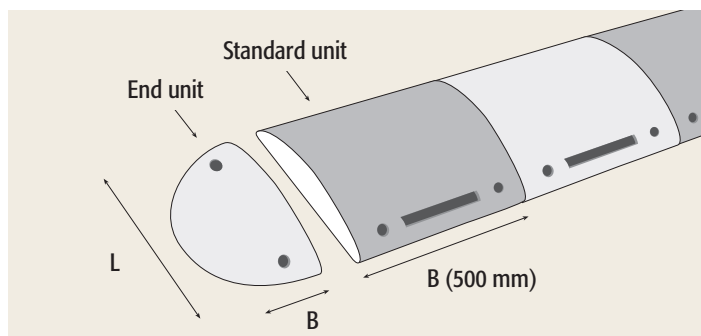
TOPSTOP speedbump made from recycled materials



Recycled plastic speed bumps. Keep vehicle speeds down. For exits, loading bays, weighbridges, crossings etc. Prominent in yellow/black. End units at sides protect cyclists and pedestrians.

- Makes vehicles slow down
- Easy-fit (bolts down)
- Highly cost-effective, highly effective
- 5-RE and 20-RE with reflectors
- Three heights = three speeds

Design	Colour	Dimensions (mm) L x B x H	Reference
TOPSTOP 5-RE Recommended passing speed < 5 km/h			
Standard unit	Black	500 x 500 x 70	281.14.155
	Yellow		281.18.436
End unit	Yellow	500 x 250 x 70	281.18.224
			281.15.317
TOPSTOP 20-RE Recommended passing speed < 20 km/h			
Standard unit	Black	400 x 500 x 50	281.16.415
	Yellow		281.18.692
End unit	Yellow	400 x 250 x 50	281.19.480
			281.15.466
TOPSTOP 30-RE Recommended passing speed < 30 km/h			
Standard unit	Black	500 x 500 x 30	281.15.289
	Yellow		281.16.941
End unit	Yellow	500 x 250 x 30	281.17.266
Roadway anchor (each standard unit requires four and each end unit two)			100.17.393



SafetyRider® rubber speed bump



High-grade, extremely strong speed bump in special rubber mix.

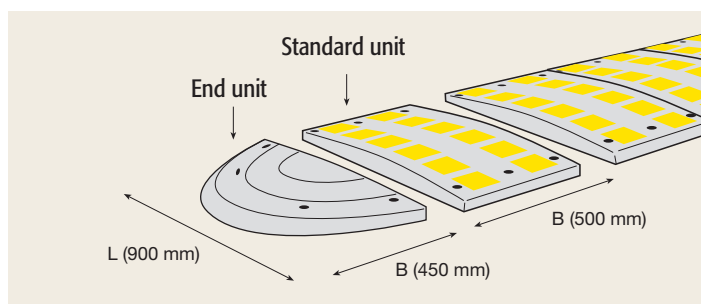
Suitable for very tough, long-term use.

Highly visible units with black colour and yellow reflector elements.

'Extended' 900 wide ramp is very comfortable to drive over.

50 mm high = 25 – 30 km/h
75 mm high = 15 – 20 km/h

- Makes traffic slow down
- Easily fitted (bolts)
- High strength
- Stable shape
- Two heights for different speeds



Design	Colour	Dimensions (mm) L x B x H	Reference
Standard unit element	Black/yellow	900 x 500 x 50	284.20.824
		900 x 500 x 75	284.26.552
End unit with pegs	Black	900 x 450 x 50	284.26.082
		900 x 450 x 75	284.28.854
End unit with track	Black	900 x 450 x 50	284.25.564
		900 x 450 x 75	284.22.604
Roadway anchor (each standard unit requires six and each end unit four)		10/100	284.29.778
Signs and fittings			

MORION cable bridge, large





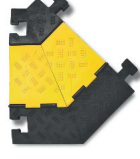


Allows vehicles to cross cables and hoses easily. With special rubber mix for extra strength.

High-grade yellow plastic cover increases visibility.

Three cable runs:
Twin-channel Single-channel

Optional extras: 45° angle for corners and end units.

- Non-slip surface
- Jigsaw units can be extended at will.
- For occasional HGV traffic.
- Ramp height 75 mm.

Design	Colour	Dimensions (mm) L x B x H	Reference
	Black/yellow	960 x 600 x 75	279.23.799
	Black/yellow	500/200 x 600 x 75	279.29.848
			279.26.562
	Black	283 x 600 x 75	279.20.233
			279.22.899

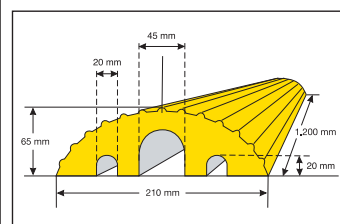


MORION cable bridge, small



Protects cables and hoses up to 45 mm.

- Flexible high-strength natural rubber
- Withstands HGVs and trucks
- Yellow and black sections for prominence



Design	Colour	Dimensions (mm) L x B x H	Reference
For cables up to 45 mm in Ø	Yellow	1,200 x 210 x 65	279.28.720
	Black		279.21.784

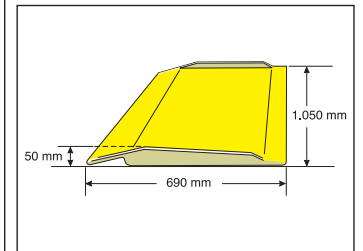
MORION kerb ramp



Fibreglass-reinforced plastic. Solid yellow material with reflective strips on sides.

Dimensions: 690 x 1,050 x 50 mm (L/B/H).

- Ultra-light (8.5 kg)
- Carrying capacity up to 350 kg
- Easily portable
- Non-slip surface
- Non-slip rubber treads



Design	Dimensions (mm) L x B x H	Reference
Signal yellow	690 x 1,050 x 50	279.18.230

PARK-IT wheel stop®



Mark out sides and ends of parking spaces with recycled rubber with built-in reflectors.

Plus reflectors and ends giving good visibility at sides.

Bolt down in place.

Effective barriers 100 mm high. Ideal for parking spaces, underground car parks and lane dividers.

- Three different lengths
- Four different colours
- Bolts included
- Oil and temperature resistant, UV stable

Design	Dimensions (mm) L x B x H	Reference
Black/white	900 x 150 x 100	284.22.610
Black/yellow		284.26.220
Maroon/white		284.27.783
Blue/white		284.20.740
Black/white	1,200 x 150 x 100	284.26.766
Black/yellow		284.21.568
Maroon/white		284.23.656
Blue/white		284.23.032
Black/white	1,800 x 150 x 100	284.27.586
Black/yellow		284.26.285
Maroon/white		284.22.724
Blue/white		284.27.231



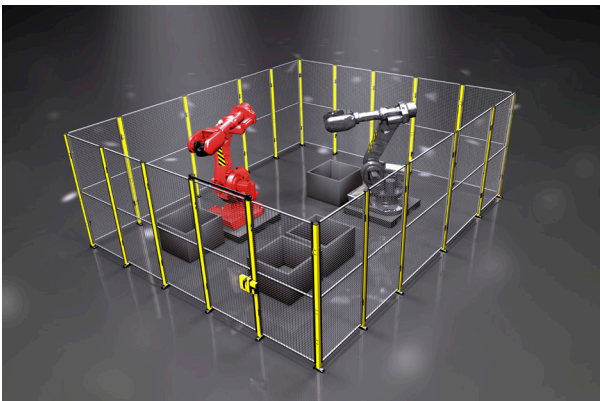
Axelent Born Global



Axelent Group

The Axelent Group is made up of four companies: Axelent, Axelent Wire Tray, Axelent Engineering and Axelent Software. These companies have the joint vision of making the industry competitive and profitable through automation, safety, rational procedures, functions and expertise.

The companies are at the growth stage, developing their businesses in both the Swedish and international markets.



Axelent AB

Axelent AB, a leading manufacturer and global supplier of mesh panel systems for machine guarding and partitioning within industry, warehousing and lost prevention. The head office is located in Hillerstorp, Sweden, along with research and development, production, storage and packaging. Axelent has sales offices in over 50 countries and subsidiaries in Germany, Belgium, the Netherlands, France, the UK, Spain, Italy, Australia, Japan and the USA.

www.axelent.com

Axelent Wire Tray AB

Axelent Wire Tray AB is an expansive company that develops, manufactures and markets a complete cable routing system based on wire trays under the brand name of X-Tray. We have created a premium brand with regard to ultimate design, functionality, materials and service. Customer collaboration is another key aspect. We appreciate customers with high demands because it enables us to continuously develop tailored solutions. Our close proximity to our design and production teams and, not least, a passion for innovative and smart solutions, means we can quickly move from concept to finished product.

Today, our products are sold all over the world and are mostly found in the energy, infrastructure, food, machinery, off shore and telecom & data industries.

www.axelentwt.com





Axelent AB is a leading and rapidly growing company that produces and sells mesh panel systems for machine guarding and partitioning within industry, warehousing and property protection. Axelent AB also embraces business area Axelent Safety, which offers complete machine safety solutions. The Axelent Group also includes Axelent Wire Tray AB (cable trays), Axelent Software (software) and Axelent Engineering AB (automation solutions). Axelent's head office is in Hillerstorp, Sweden, along with product development, production, storage and packaging. Axelent has sales offices in over 50 countries and the products are sold worldwide.

